


Choice Chambers – animal behaviour investigation!

 science-sparks.com/choice-chambers-animal-behaviour-investigation

Emma Vanstone

April 9, 2012

Choice chambers are an investigative method used to study animal behaviour and to determine the favoured conditions for a habitat.

It is a very simple investigation to set up and one that kids loves at it involves searching for insects, and then predicting and watching.

The living organism that we chose to study were woodlice as they are easy to find.

We decided to investigate whether woodlice

- prefer damp or dry conditions
- dark or light conditions

You will need:

A minimum of 5 woodlice

A collection pot

Two dishes with lids

Filter paper (I just used coffee filter paper)

Dark or black paper

A pen/scissors

Method

1. In your collection pot, put in some soil and dried leaves. Start looking under stones and bricks for some woodlice and put them in the pot. Make sure it is deep as woodlice are very good climbers and we had a few escapees! This is just to keep them happy when not under investigation as we do not want to put them under undue stress.



2. Draw around the lid of your pot onto the filter paper
3. Cut it out and fold in half.
4. Wet it and place it one side of the pot.

5. Add your woodlice and over time see which side they prefer over time (about 5 minutes to let them acclimatise to their surroundings). The side that has the most of all of the woodlice is the side they prefer.

6. You can then repeat this experiment using the dark paper to block out one side of the lid to see whether they prefer dark or light conditions.

7. You could also see if you can carry this out with other insects.

Please be sure to return the insects to the place you found them.

Have Fun

Kerry



Collection pot!



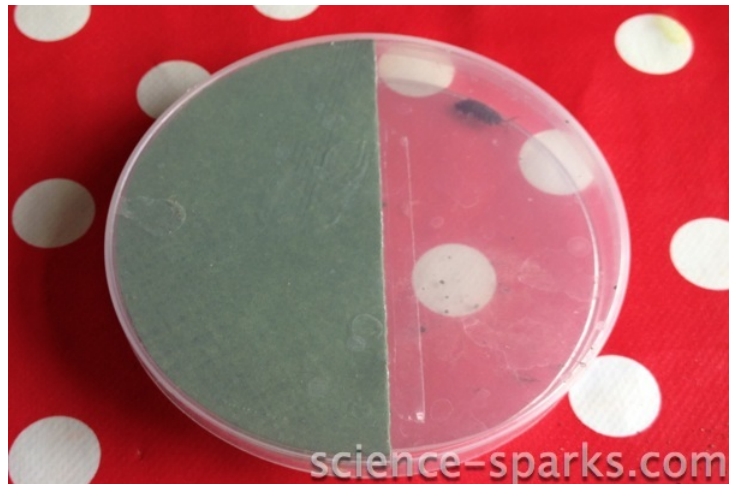
Draw around the lid



Add you woodlice



After 5 minutes!



Light or Dark?