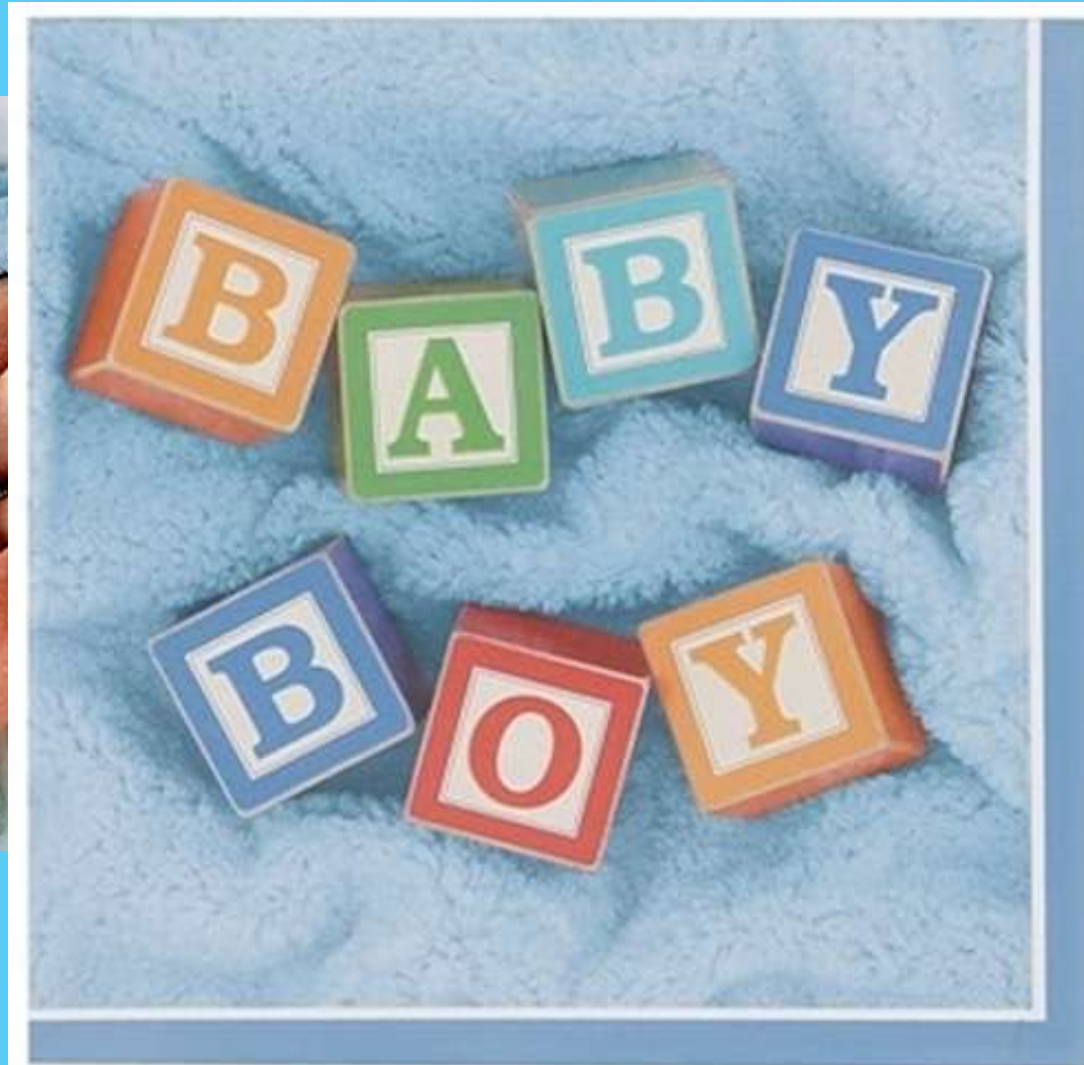
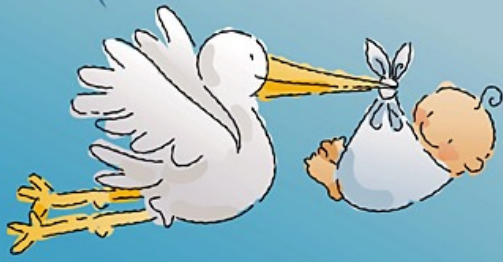


Sammy L. Beasley



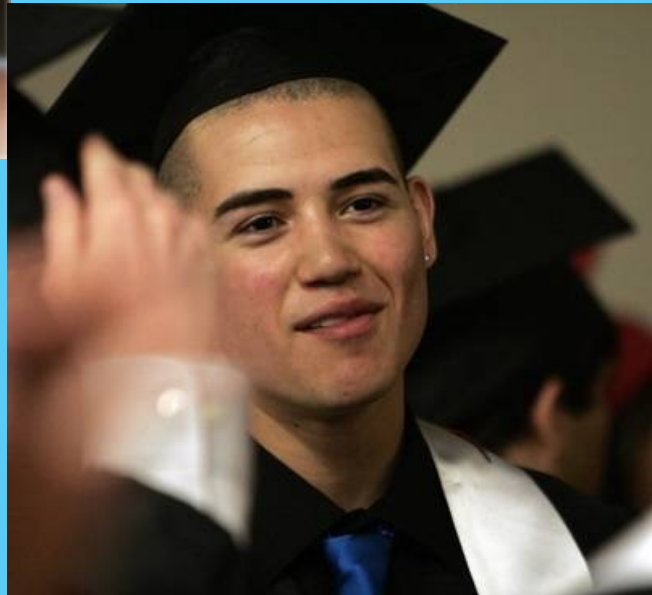
Sammy

- Sammy was a happy, normal, healthy boy.



Sammy

- There was nothing in his life to indicate that he was different from anyone else.



- When he completed high school, he got a job in a factory running a machine press.



Sammy

- On this job, he had an accident and lost his hand. It was replaced with an artificial hand that looked and worked almost like a real one.

1. **Is Sammy Alive? Explain.**

- Soon afterward, Sammy developed a severe intestinal problem. A large portion of his large intestine had to be removed. It was replaced with an elastic silicon tube.

2. Is Sammy Alive? Explain.

- Everything looked good for Sammy until he was involved in a serious car accident.



3. **Is Sammy Alive? Explain.**

- His legs and his good arm were crushed, and had to be amputated.
- He also lost one of his ears in the accident. Artificial legs enabled Sammy to walk again and an artificial limb replaced his other arm. Plastic surgery and the use of silicon plastic allowed the doctors to rebuild his ear.

4. **Is Sammy Alive? Explain.**

- Over the next several years Sammy was plagued with internal disorders.
- First, he had to have an operation, which removed his aorta and replaced it with a synthetic vessel.
- Next he developed a kidney malfunction, and the only way he could survive was to use a kidney dialysis machine. (no donor was found for a kidney transplant).
- Later, he developed cancer of the digestive system, so it was removed, and he had to be fed intravenously.
- Finally, his heart failed. Luckily for Sammy, a heart donor was available and a heart was transplanted into his body.

5. **Is Sammy Alive? Explain.**

- It was now obvious that Sammy had become a medical phenomenon. All of his limbs were artificial. Nourishment was supplied through his veins, so he did not have any solid waste. A kidney dialysis machine removed all chemical waste materials. It was the transplanted heart that pumped his blood which carried oxygen and food to his cells, not his own. But now the transplanted heart began to fail. Sammy was immediately placed on a heart-lung machine, which circulated his blood, supplying oxygen and removing the carbon dioxide from his blood.

6. Is Sammy Alive? Explain.

- The doctors consulted bioengineers about Sammy. Because the machines were carrying on almost all of his life-sustaining functions, it might be possible to devise one mobile unit, which could be controlled by electrical impulses from Sammy's brain! This unit would be equipped with mechanical arms to allow him to do multiple tasks! A mechanism to create a flow of air over his vocal cords might enable him to speak! To do all this they would have to amputate at Sammy's neck and attach his head to the machine, which would then supply all the nutrients to his brain. Sammy consented, and the operations was successfully performed!!!

7. **Is Sammy Alive? Explain.**

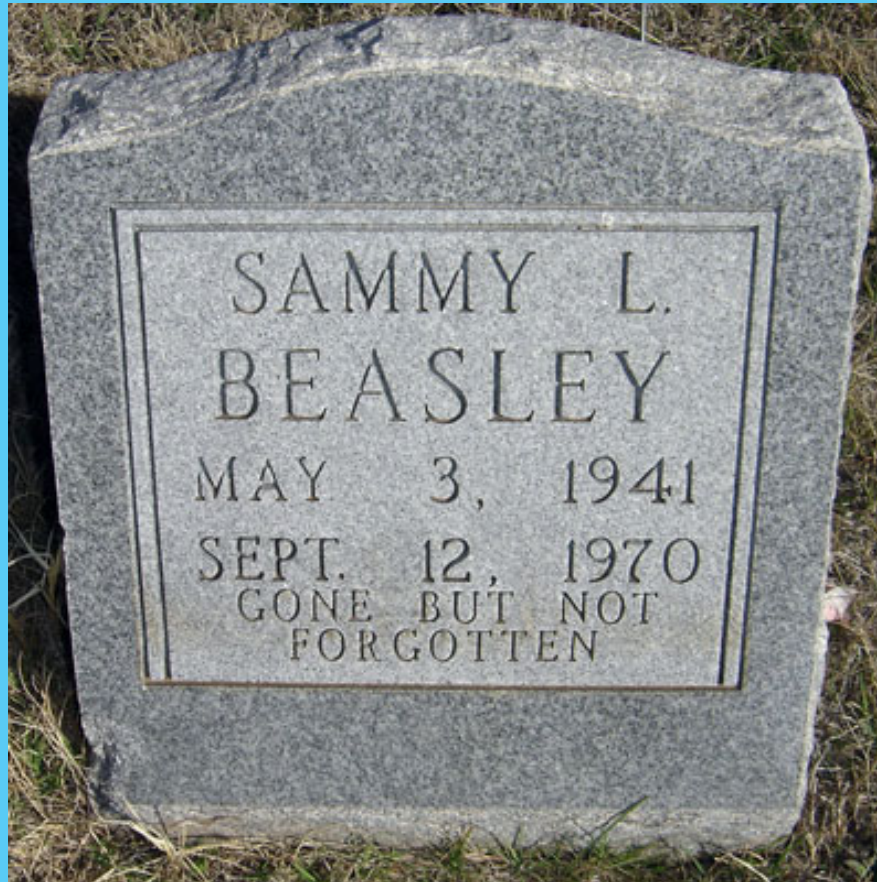
- Sammy functioned well for a few years, however, a slow deterioration of his brain cells was detected and the bioengineers diagnosed him as terminal. So the medical team and the bioengineering team worked around the clock to program Sammy's brain. A miniature computer was developed; it could be housed in a machine that looked like a human head, in appearance, movement, and mannerisms. As the computer was installed, Sammy's brain cells completely deteriorated. Sammy was once again able to completely leave the hospital with COMPLETE assurance that he would not return with any biological illnesses!

8. **Is Sammy Alive? Explain.**

Question

9. Sammy stopped living at some point during the story. When do you feel that Sammy stopped living?

10. Explain using the evidence in the story.



SAMMY L.
BEASLEY

MAY 3, 1941

SEPT. 12, 1970

GONE BUT NOT
FORGOTTEN

